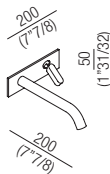
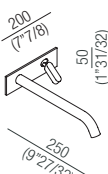


	Rubinetti / Taps
	SQUARE
	ERUB1082 -ERUB1116
	ESTERNO GRUPPI LAVABO EXTERNAL PART WASHBASIN TAPS

ARUB1082T



ARUB1116



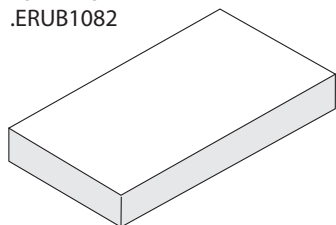


Prima di realizzare l'impianto consultare la scheda Cod. 16024 e le istruzioni Cod.16018 per i flessibili.

Before installing the system refer to the Code tab. 16024 and the Cod.16018 instructions for the hoses.

CONTENUTO DELLA CONFEZIONE
PACKAGE CONTENTS

ESTERNO
.ERUB1082



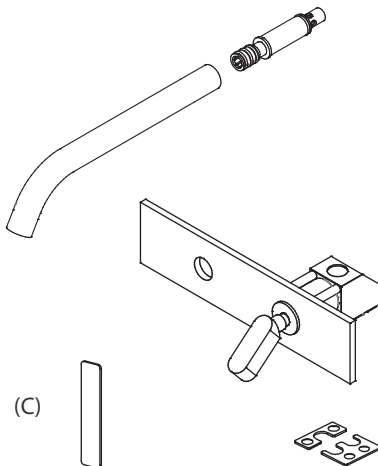
(A)



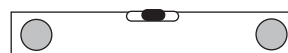
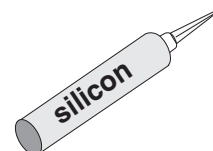
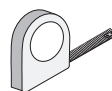
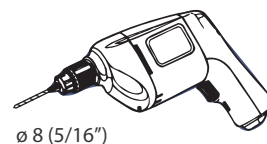
(B)



(C)

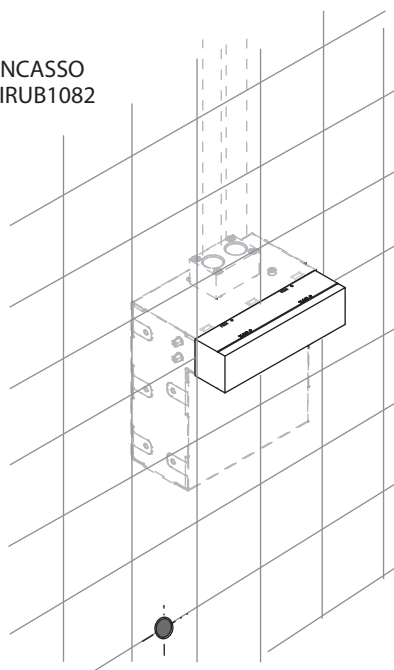


STRUMENTI
TOOLS

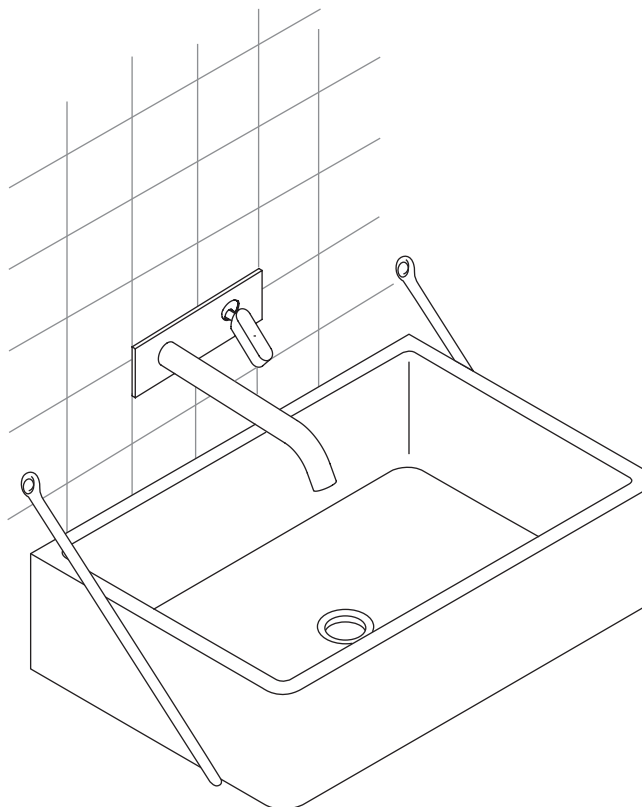


PREDISPOSIZIONE
TAP PREDISPOSITION

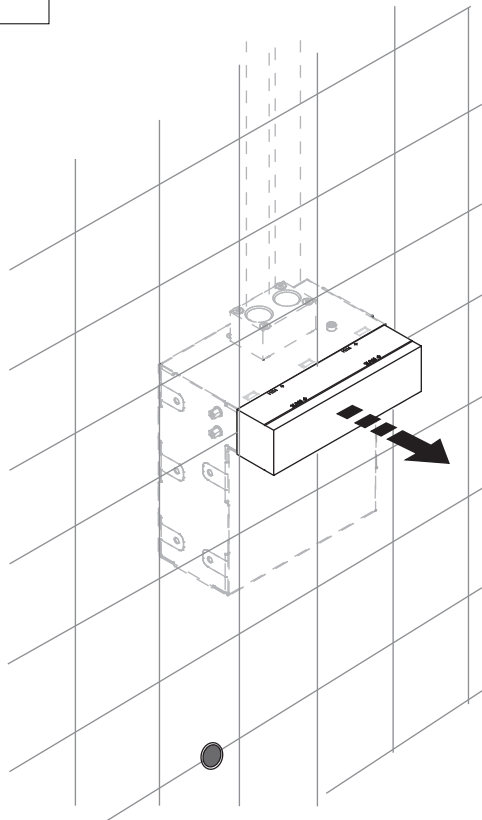
INCASSO
.IRUB1082



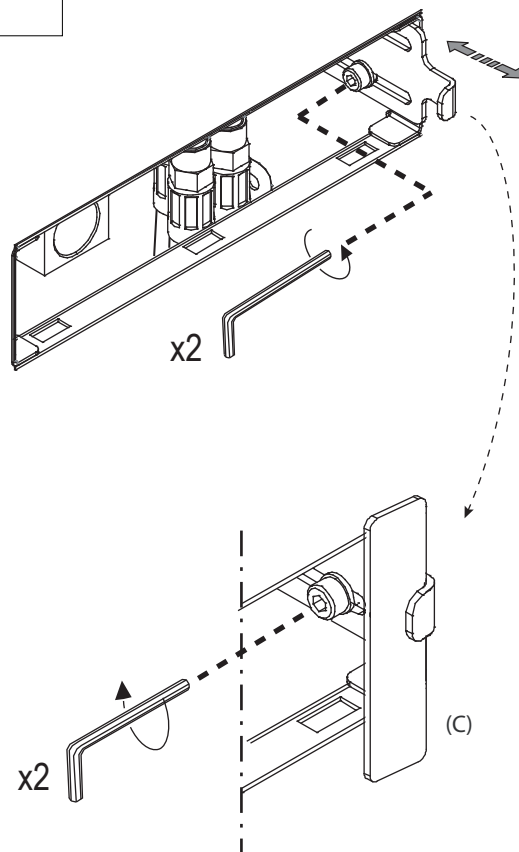
RUBINETTO INSTALLATO
TAP MOUNTED



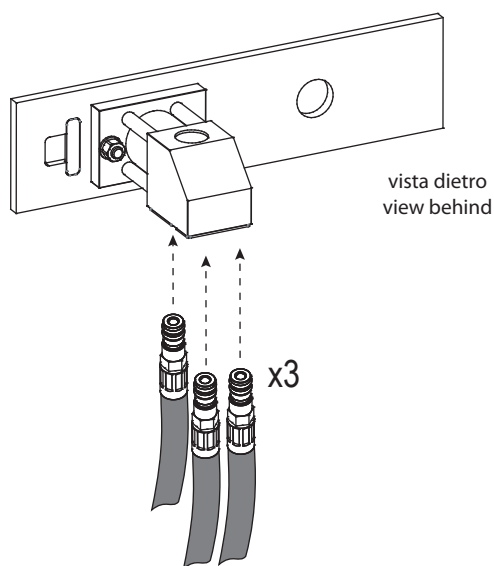
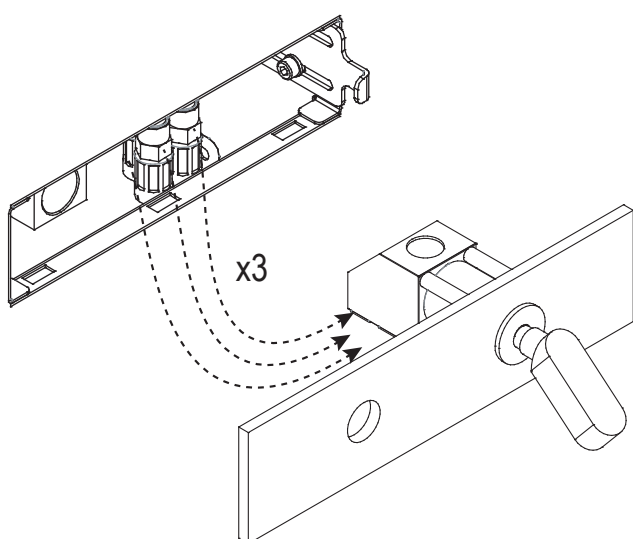
1



2



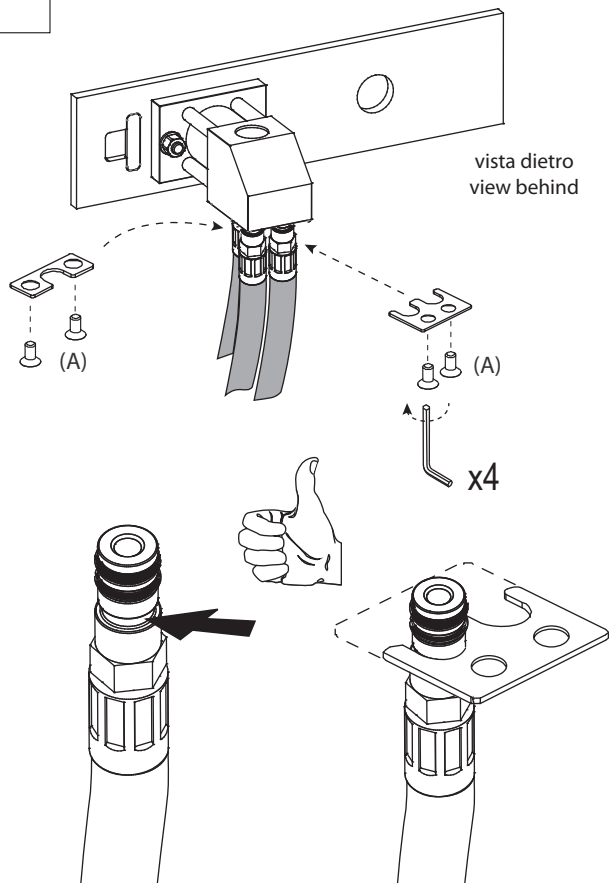
3



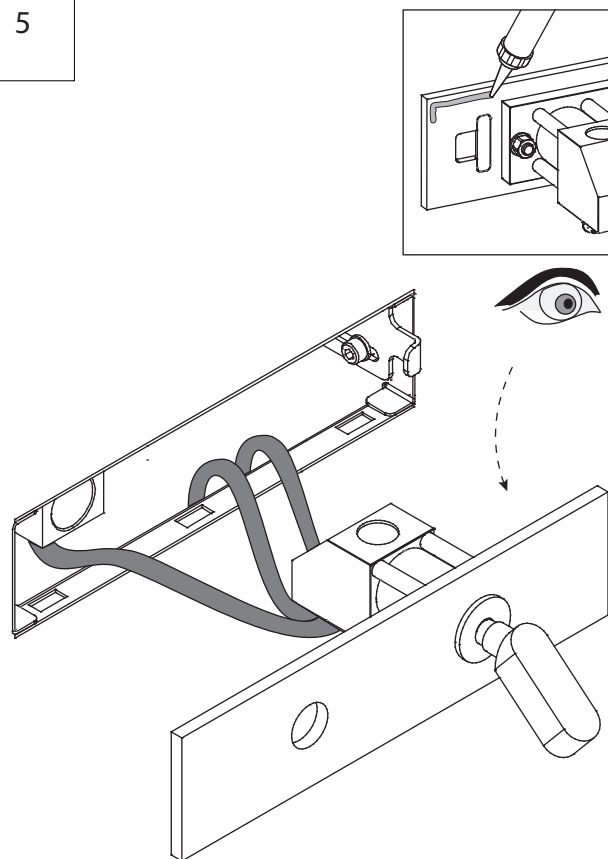
Inserire i flessibili nella sede con il colore rispondente
Insert the hoses into the housing with the corresponding color

4

Bloccare i flessibili
Lock the hoses

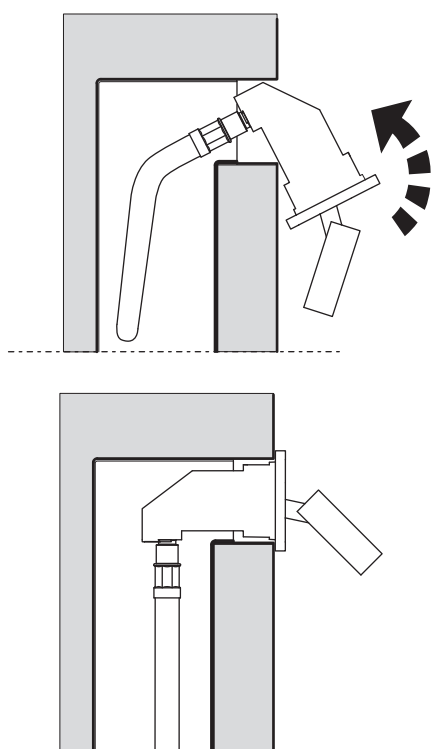


5

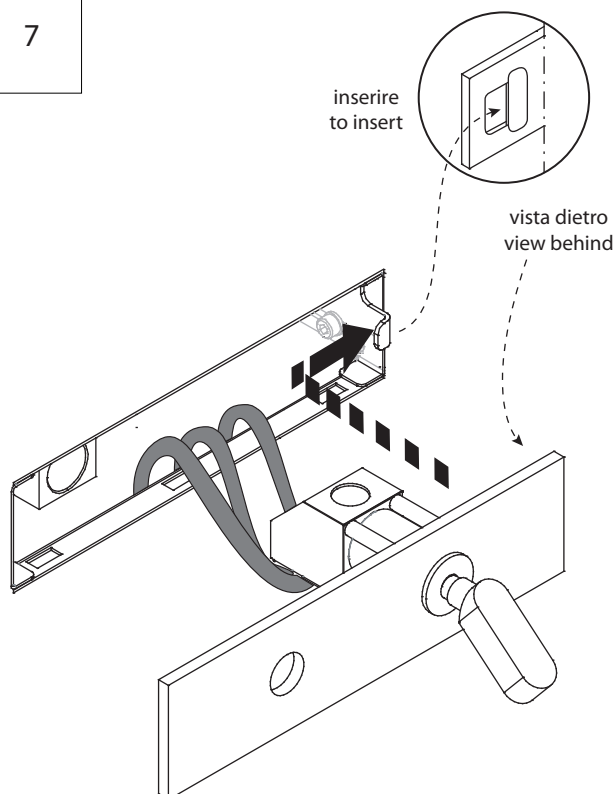


6

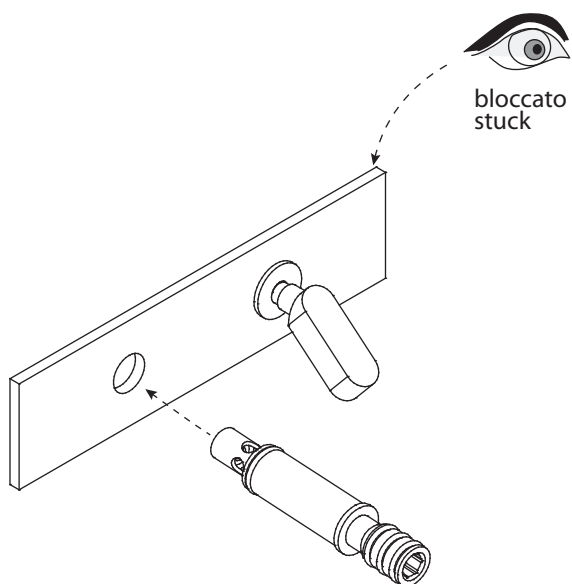
Inserire con attenzione
carefully insert



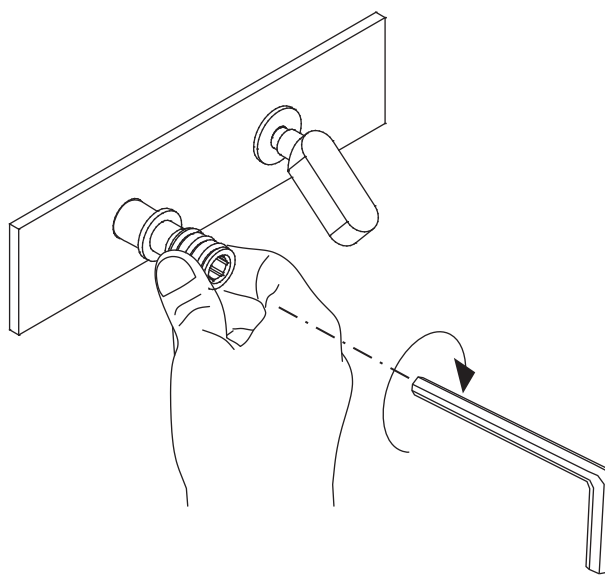
7



8

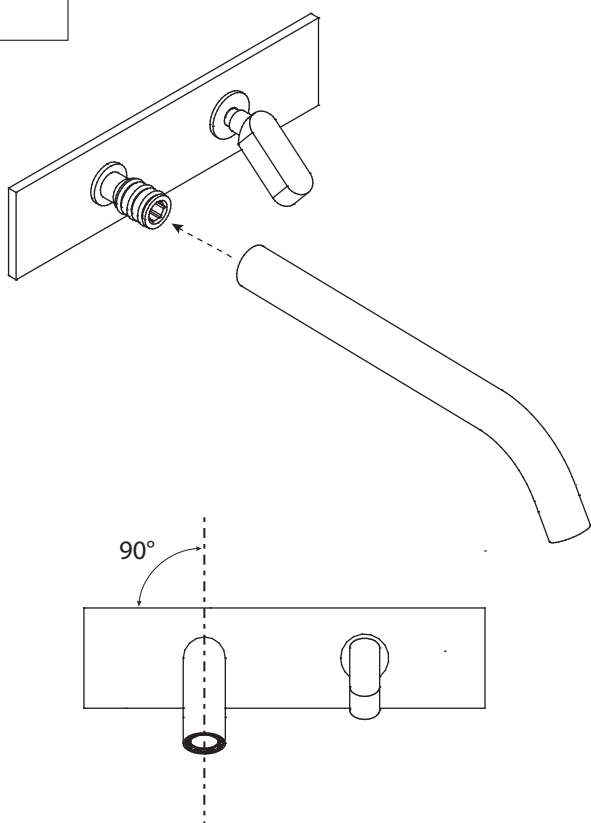


9



Chiave non fornita
Key not provided

10



11

Effettuare alcune prove di tenuta dell'impianto realizzato
Test different times the seal of the realised plant

